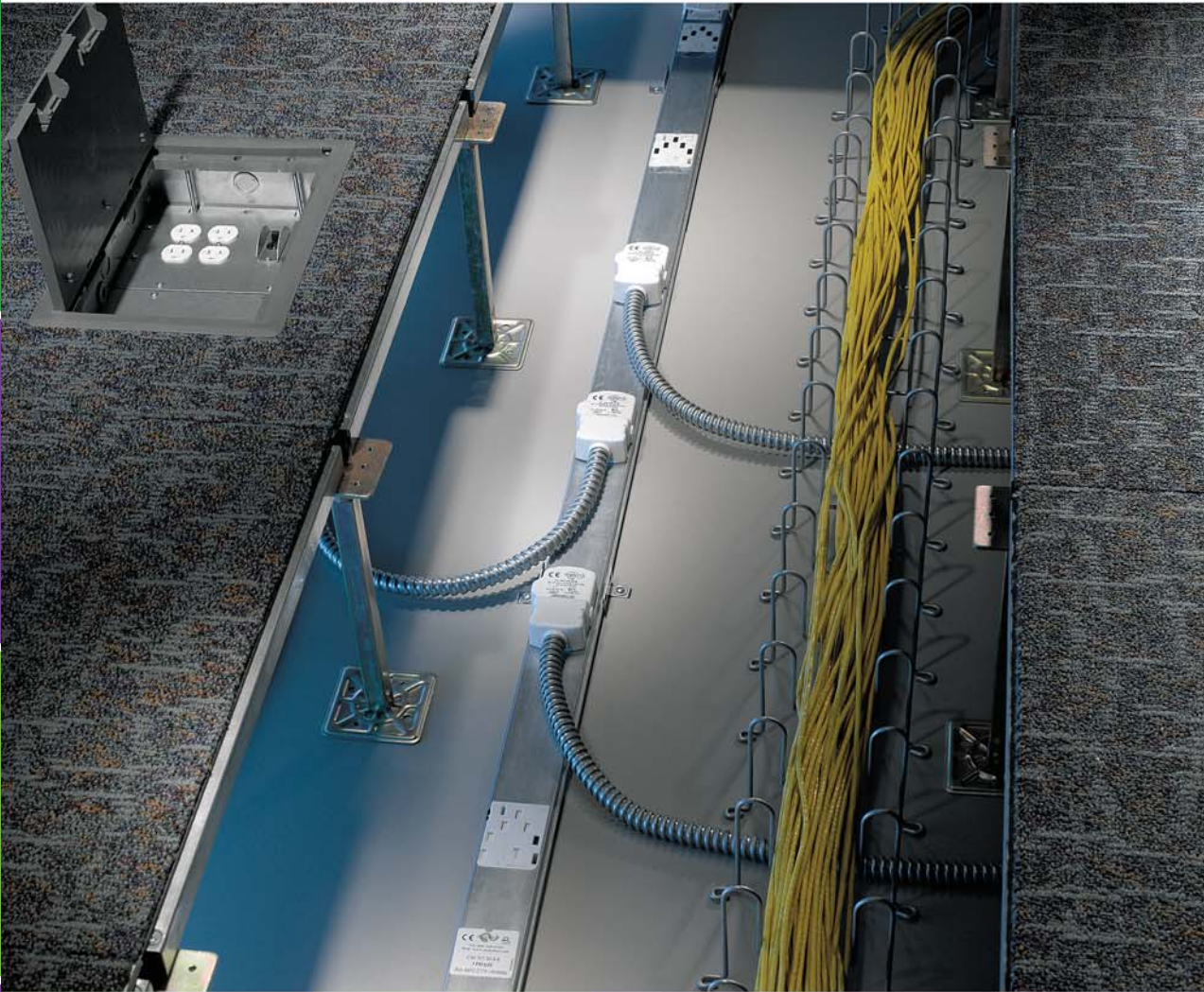


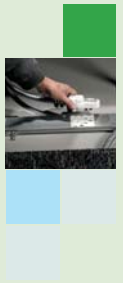
**Fast Track to
Green Power!**



**Snake Bus[®]
Power Distribution**



Snake Bus® Power Distribution



ELECTRICAL CHARACTERISTICS

Rated Current		50	Amps
Rated Voltage		208Y/120 or 480Y/277	Volts
Frequency		50/60	Hz
Conditional Short Circuit Rating	(Protection device)	16	KA
Conductor Resistance Line & Neutral		1.0	mΩ/ft
Conductor Impedance		1.5	mΩ/ft
Volt Drops Line & Neutral	Snake Bus®	1.0	mV/A/ft
	Feed Unit + Coupler	2.2	mV/A
	Tap-Off	0.73	mV/A
	12 AWG	4.4	mV/A/ft
	Coupler	1.5	mV/A
	Interlink	4.5	mV/A
	8 AWG	1.71	mV/A/ft

MECHANICAL DATA

Number of Copper conductors		2, 3 or 5	
Snake Bus® Casing Copper Equivalent	(Where casing is Ground)	3.3	AWG
Cable Termination Capacity		8 - 6	AWG
Tap-Off Cable 30 Amp Max		10	AWG
Tap-Off Conduit Sizes		1/2	Inch ULI
Flexible Interlink Cable 50 Amp		8	AWG
Flexible Interlink Conduit		3/4	Inch ULI
Feed Conduit Entry		2 x 3/4	Inch
IP Rating		40	
Minimum void depth (track + tap-off)		2 3/16	Inch

MATERIAL SPECIFICATION

Snake Bus® Casing	Galvanized Steel
Conductors	High Conductivity Copper
Snake Bus® Insulators	PBT
Sockets/ Tap-Off Plugs/ Joint Molding	Polycarbonate LSF
Shutter	PBT
Tap-Off / Interlink Flexible Conduit	Galvanized Steel ULI
Tap-Off Cable	ULI063 Type MTW
Tap-Off / Coupler Blade	Brass Silver Plated
Feed Unit Case	Galvanized Steel
Flexible Interlink Cable	ULI028 Type TEW
Feed / Flexible Interlink Housing	Galvanized Steel





Snake Bus[®]

Power Up the Possibilities!

Enjoy big cost savings with the fastest, most flexible Power Distribution Solution!

Snake Bus is a modular power distribution system that offers the most flexibility in power distribution for workstations, call centers, trading floors and data centers.



Fast

Traditional methods of hard wiring equipment are eliminated with Snake Bus pre-configured components that allow you to instantly create your power distribution system.

Energy Efficient

Snake Bus' innovative bus bar technology is more efficient than traditional copper wire. Bus bar technology experiences less voltage drop which can save on energy consumption.

Flexible

Installations, adds, moves and changes are easily done with the Snake Whips (tap offs) that deliver power to individual devices anywhere along the track and can be moved with a 10 second connection.

Powerful

Snake Bus three-phase advantage delivers 50 Amp 3-Phase 208 Volt providing up to 15 Kilowatts of power in one easy-to-install track.

Convenient

Quickly install the power track, feed unit and tap offs to create your complete power distribution system. Simplified part system makes installation and retrofits quick and easy. Convenient 4-foot and 8-foot snap-together tracks configure to any size power distribution system to meet your particular application.

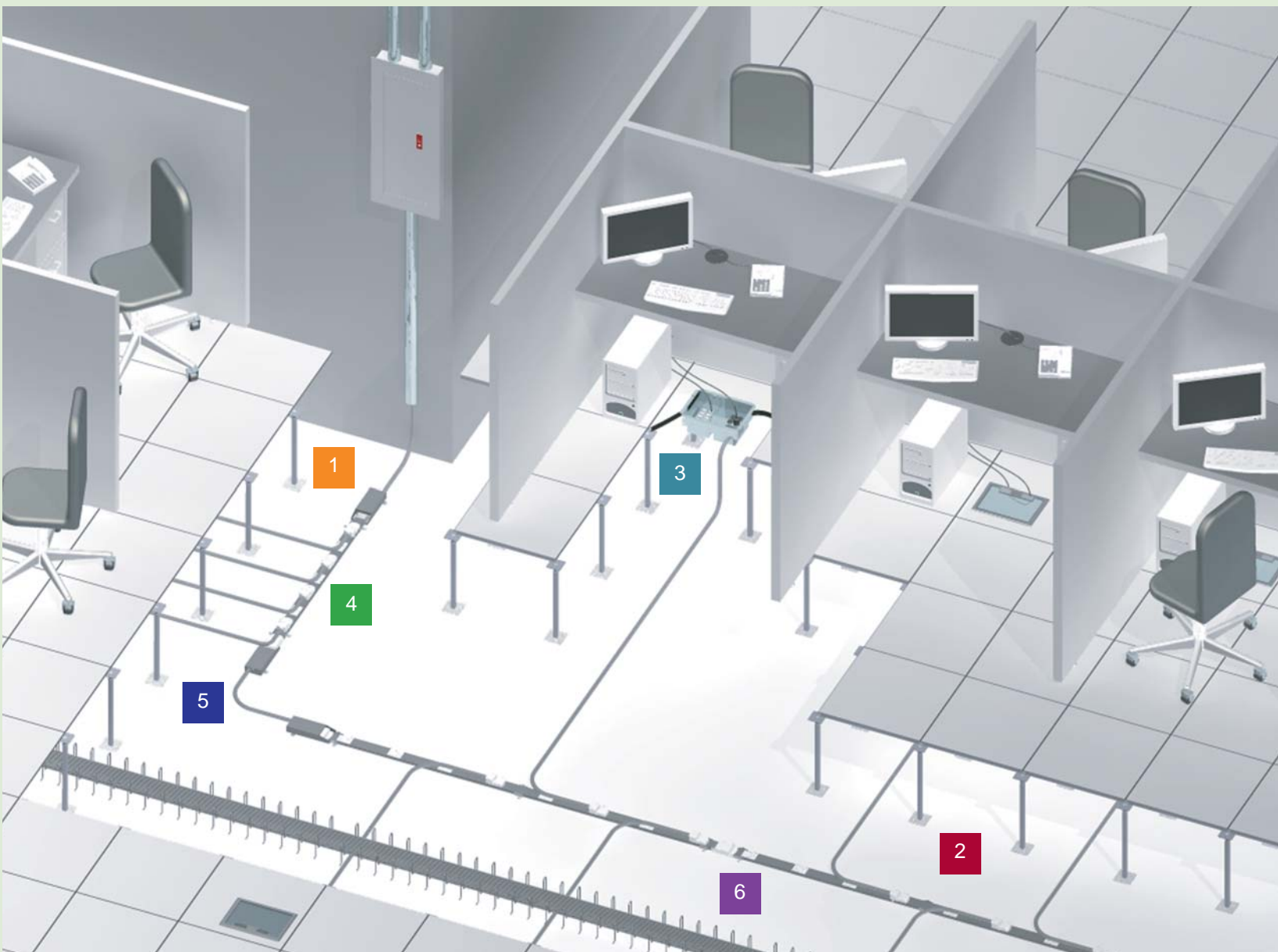
Functional

Provides both the equipment and isolated ground in one single system.

Sleek

Snake Bus' slim profile fits in a space less than 2 1/2-inches in height allowing for proper airflow under an access floor. The flexibility of the linear design complements workstation and data center layouts.

NRTL Listed to UL 183



1 Snake Bus Feed Module is hard wired to the building's electrical system supplying 3 phase, 50 amp power to the tracks.

2 Snake Bus Tracks with 3 Phase, 50 Amp modular bus bar system with tap offs for power every 12 inches.

3 Snake Connect Floor Box can be configured to the customer's electrical and data specifications with integrated circuit protection.

4 Snake Whips snap on power whips configured to the customer's electrical requirements.

5 Snake Bus Interlink allows tracks to easily make directional changes.

6 Snake Tray hand bendable cable tray for under access floors.

Snake Bus[®] is Green!

Snake Tray is deeply committed to offering cable management and power distribution products to support building owners, architects, design engineers and contractors build sustainable and LEED certified buildings. Snake Bus has many inherent green features.

Energy efficient

Snake Bus' unique bus bar design experience less resistance than traditional copper wire thus reducing energy loss.

No material waste

System requires no use of pipe and wire, no vertical cabling and eliminates abandoned cable minimizing landfill additions.

Re-usable, movable and can be reconfigured

Snake Bus can be easily moved and reused. You can also reconfigure the system for a different application.

Consumes less copper resource

Snake Bus consumes approximately 30% less of the earth's copper resource than all other methods.

Reclaimable parts

System made of 99% reclaimable products.

The Snake Bus system installs in record time and can be easily moved to facilitate changes in the electrical plan.



Track

Distributes the power under access floor and is available in 4 and 8 foot sections, 50 Amp, with 4 or 8 receptacles for the Snake Whips.



Trading Desk Module

Brings power to the trading or call center desk and hooks up directly to the power distribution modules at the desktop.



Snake Whip

Delivers power from the track to the floor box, PDU, rack or enclosure. Pre-configured to the electrical requirements of the devices. The 10-second connection easily moves to accommodate changes. Available in any length up to 25 feet.



Feed Module

Delivers power from the building or power supply to the Snake Bus tracks to instantly energize the electrical plan.



Floor Box

Snake Tray can supply customer specified floor boxes to interface with the Snake Bus system.



Interlink

Allows for directional changes and can easily snake around obstacles under access floors.

The Snake Tray[®] Advantage

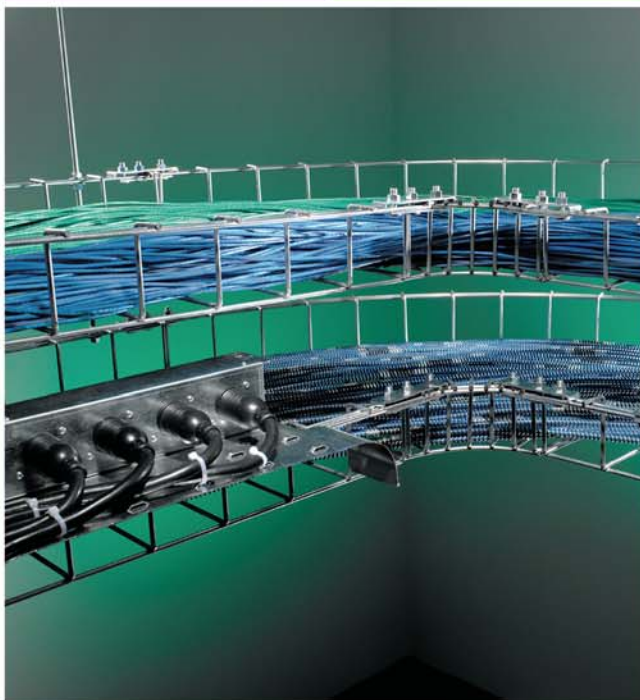
Snake Tray has revolutionized cable management, power distribution and airflow management with a stream of innovative products designed to simplify installations, reduce labor and material costs and drive down the total cost of construction.

Snake Tray substantially reduces on-site install time to cut labor costs!



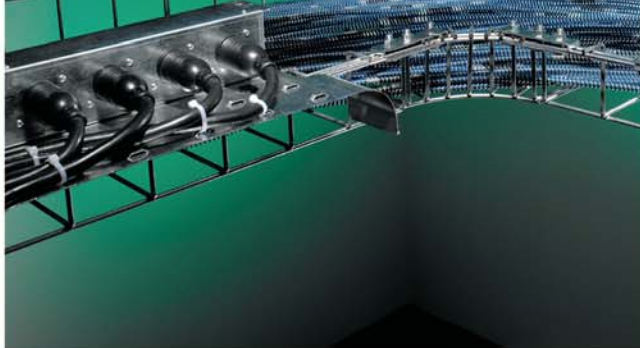
Snake Tray[™]

Snake Tray, the world's only hand bendable cable tray system, eliminates time-consuming cutting and clipping to create turns. The built-in mounting hardware along with a single point connection and hand bendability allows this cable support system to install faster than traditional wire mesh cable trays.



Mega Snake[™]

Mega Snake, high capacity overhead cable tray, comes in pre-manufactured sections to make it the fastest-installing cable tray in today's market. Mega Snake's patented mounting rail allows for a two-point suspension and can easily accommodate power modules and other accessories.



Snake Canyon[®]

Snake Canyon is the fastest-to-install modular cable tray system for access floors. Thanks to its unique patented mounting system (Cam-Loc and Latch-Loc), Snake Canyon requires no additional hardware and installs in a fraction of the time compared with traditional cable trays. Its unique design allows it to integrate with any access floor while maintaining proper airflow.



Snake Air[®]

Snake Air airflow managers for data centers and workstations offer a cost effective way to manage airflow to protect sensitive equipment from overheating and to conserve energy. There are Snake Air models for access floors, equipment racks and network switches.



Snake Tray[®] products are covered by one or more of the following patents: #6,637,704, #6,637,165, #6,463,704, #6,460,812, #6,449,912, #6,361,000, #6,347,493, #6,019,323, #5,953,870, #5,839,702, #6,926,236, #6,347,493, and #7,168,212. Other US and Foreign Patents Pending.

Snake Tray[®]

800-308-6788 • 631-674-0004

web: www.snaketray.com

291 Skip Lane, Bay Shore NY 11706 USA

Fax: 800-881-6641 • 631-674-0010

MADE IN USA

MKTG-0007 • © Copyright Snake Tray

